



Worldox Integration with Canon P-215II Scanner

Version 1.0

WARRANTIES AND COPYRIGHT NOTICES

Disclaimer of Warranty

World Software Corporation makes no representations or warranties, either expressed or implied, by or with respect to anything in this manual, and shall not be liable for any implied warranties of merchantability or fitness for a particular purpose or for any indirect, special, or consequential damages.

Copyright Notice

No part of this publication may be reproduced or transmitted, in any form or by any means, photocopying, recording or otherwise, without prior written consent of World Software Corporation. While every precaution has been taken in the preparation of this document, World Software Corporation assumes no responsibility for errors or omissions. This publication and features described herein are subject to change without notice.

© 2014 World Software Corporation.
All rights reserved.

To access the latest Worldox user guides, administration guides, release notes and technical documents, please click the Download link on the Worldox Knowledge Base at <https://knowledgebase.worldox.com/>.

Table of Contents

Table of Contents.....	3
Worldox Integration with Canon P-215II Scanner	4
How to Add Worldox as a New Output Method for the Canon Scanner.....	4
How to Add the Worldox Output Method as a Shortcut.....	10
How to Scan a Document and Save it to Worldox.....	10

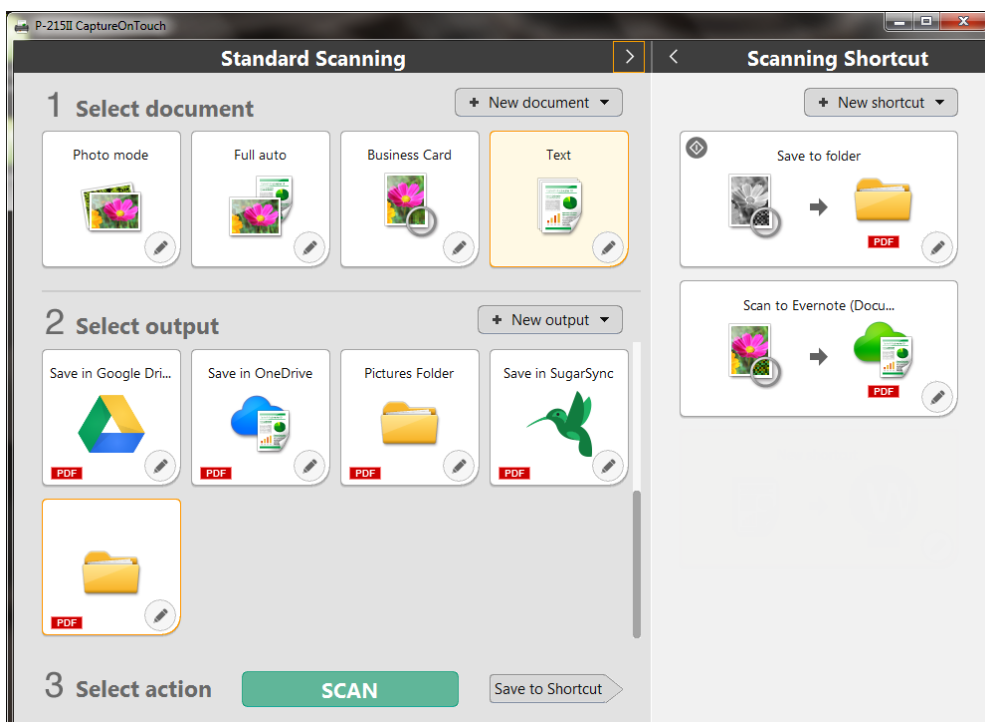
Worldox Integration with Canon P-215II Scanner

You can scan documents with the Canon P-215II scanner and save them to Worldox in a few simple steps. This integration consists of the WDCANSAVE.exe file and the Worldox application. Then when using this output option in the OneTouch Software, Worldox pops up automatically at the time of save for your scans and allows you save directly into the Worldox repository.

This document describes how to add Worldox as an output format to the Canon desktop scanner. It is assumed that you already have Worldox installed on your machine, as well as the Canon P-215II CaptureOnTouch software.

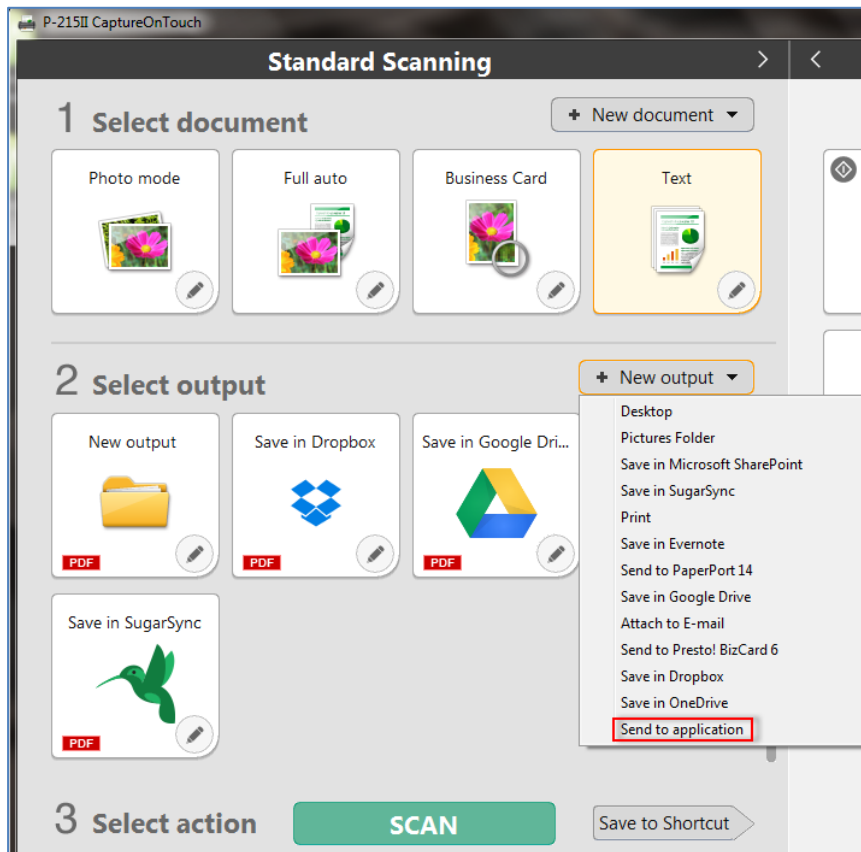
How to Add Worldox as a New Output Method for the Canon Scanner


1. Launch the Canon Scanner P-215II CaptureOnTouch software on your machine.

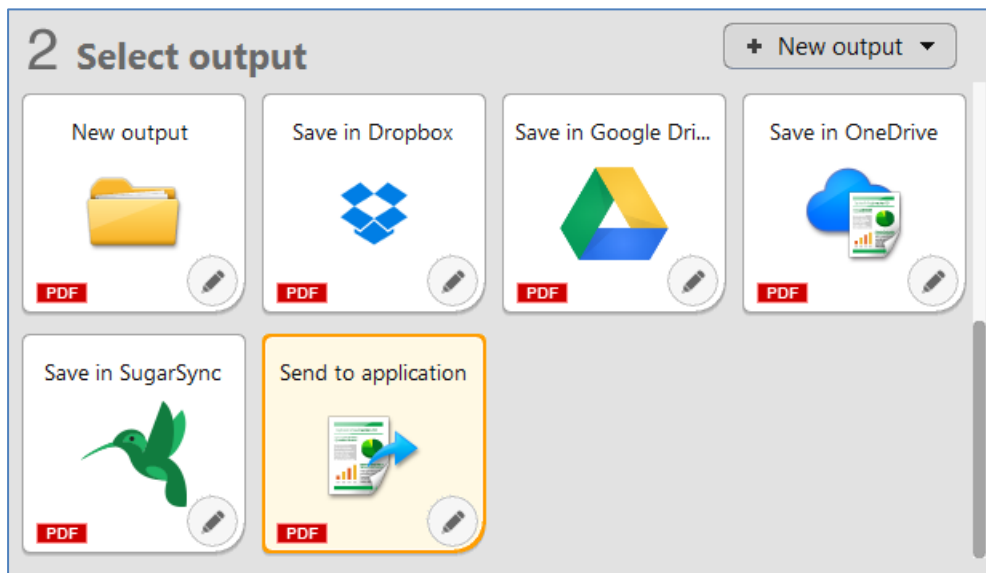


2. In the Standard scanning screen's 2 Select output section, click the arrow next to **New Output** to view the drop-down menu.

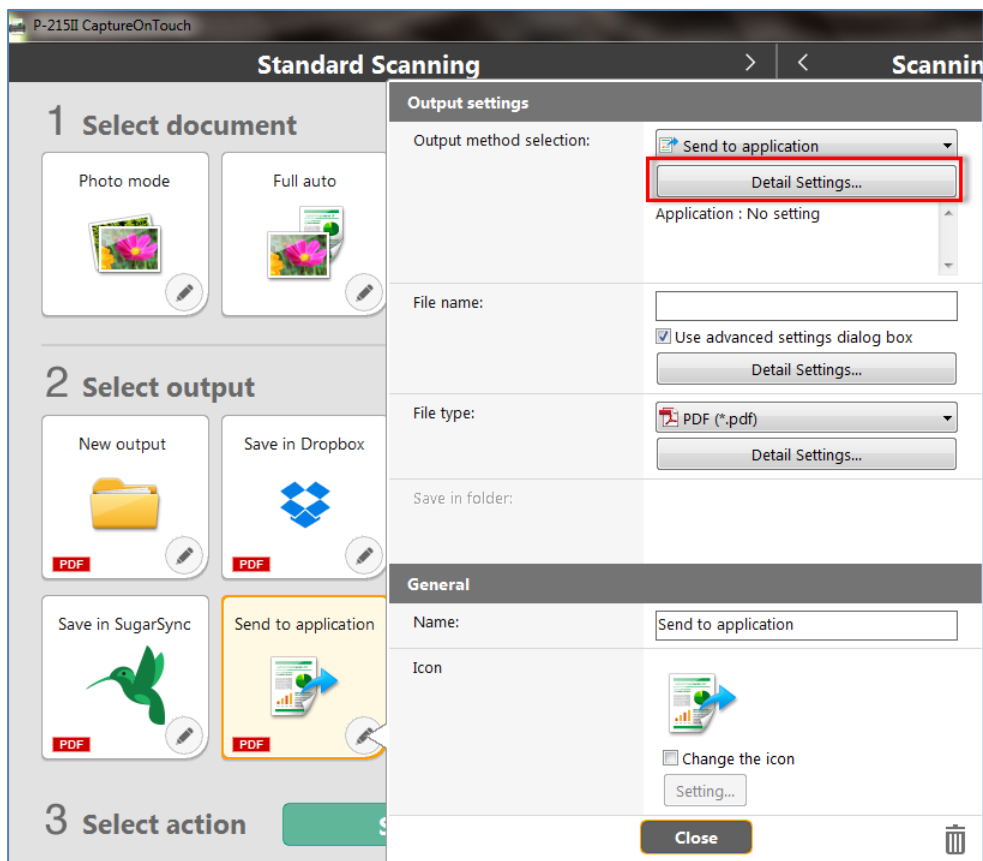
3. Select **Send to Application**.



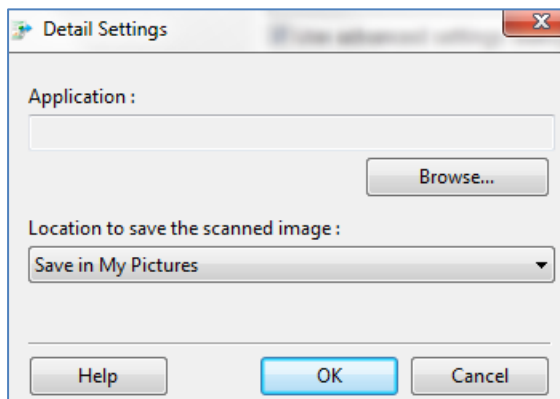
4. A new Send to application icon appears in the Select output section. Click the pencil icon  to edit new output settings.



The Output settings dialog appears.

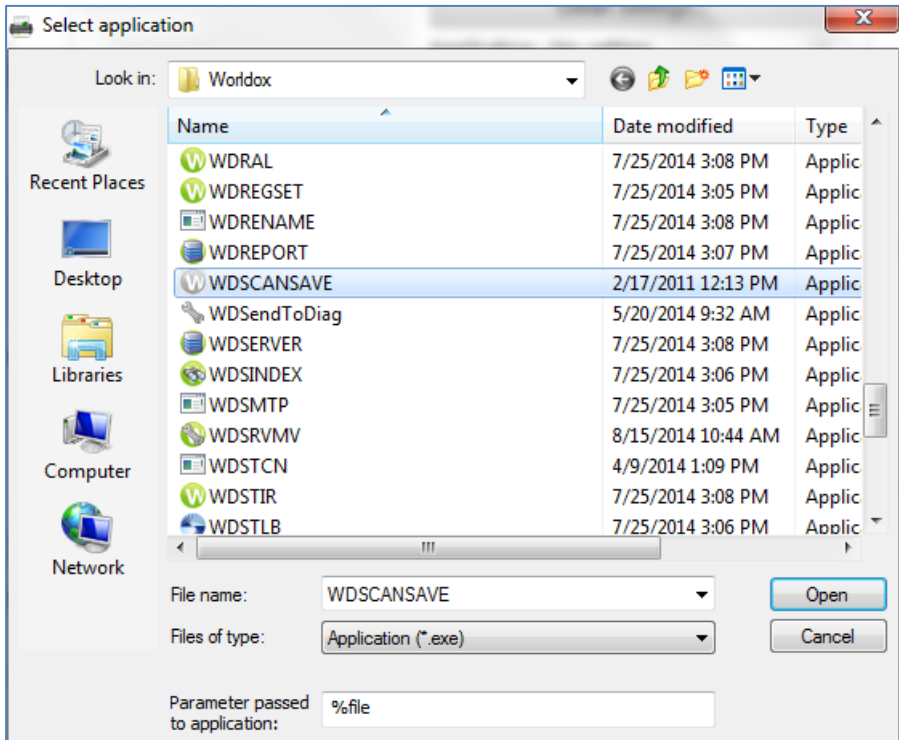


5. In the Output method selection section, click the **Detail Settings** button. The Detail Settings dialog appears.

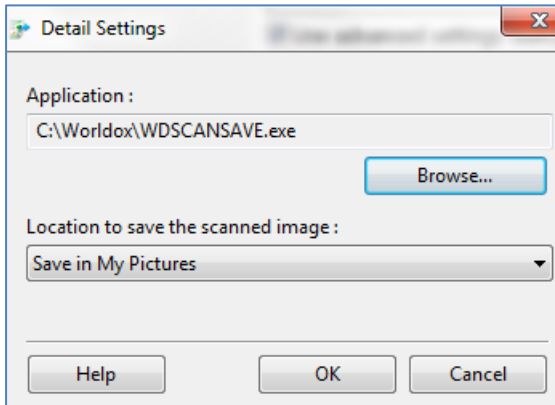


6. In the Detail Settings dialog, click the **Browse** button. The Select Application dialog appears.

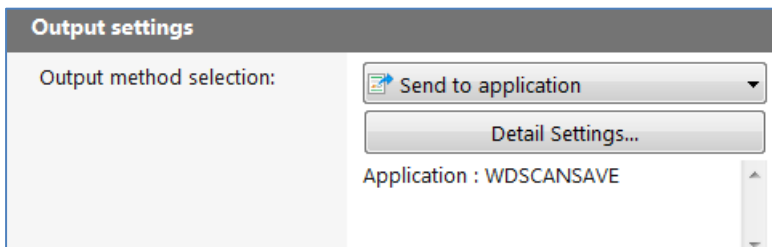
- Browse to the **C:\Worldox** program folder and locate the **WDSCANSAVE.exe** file. Click **Open**.



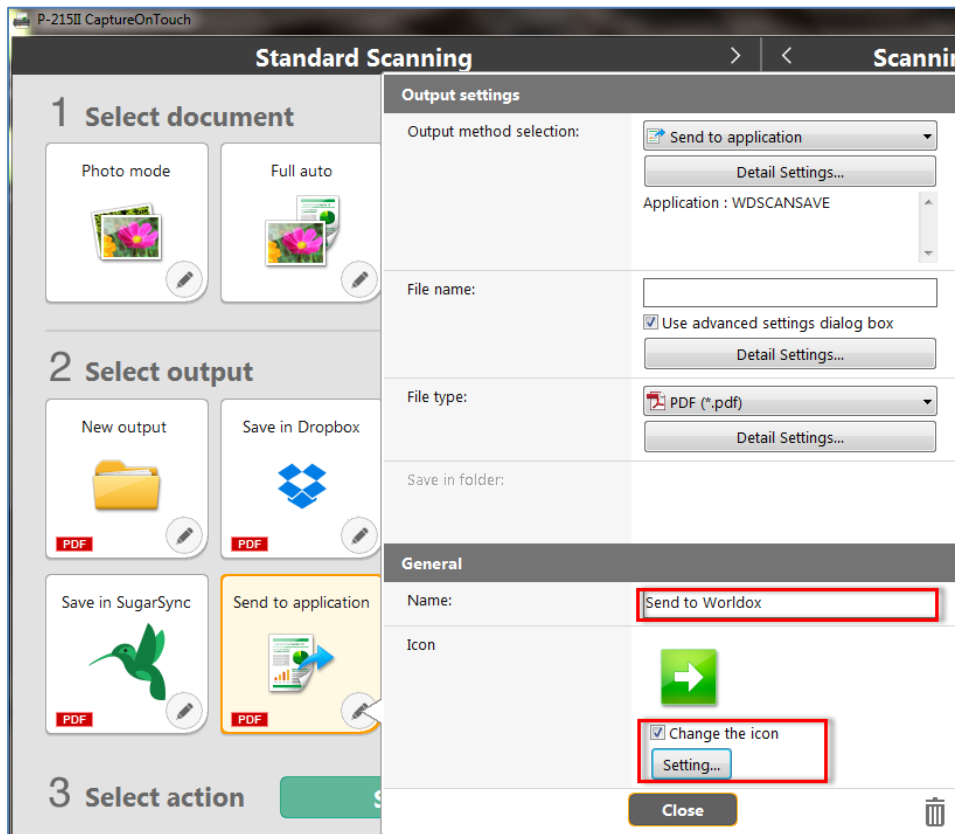
- The **WDSCANSAVE.exe** file appears in the Detail Settings dialog's Application field. Click **OK**.



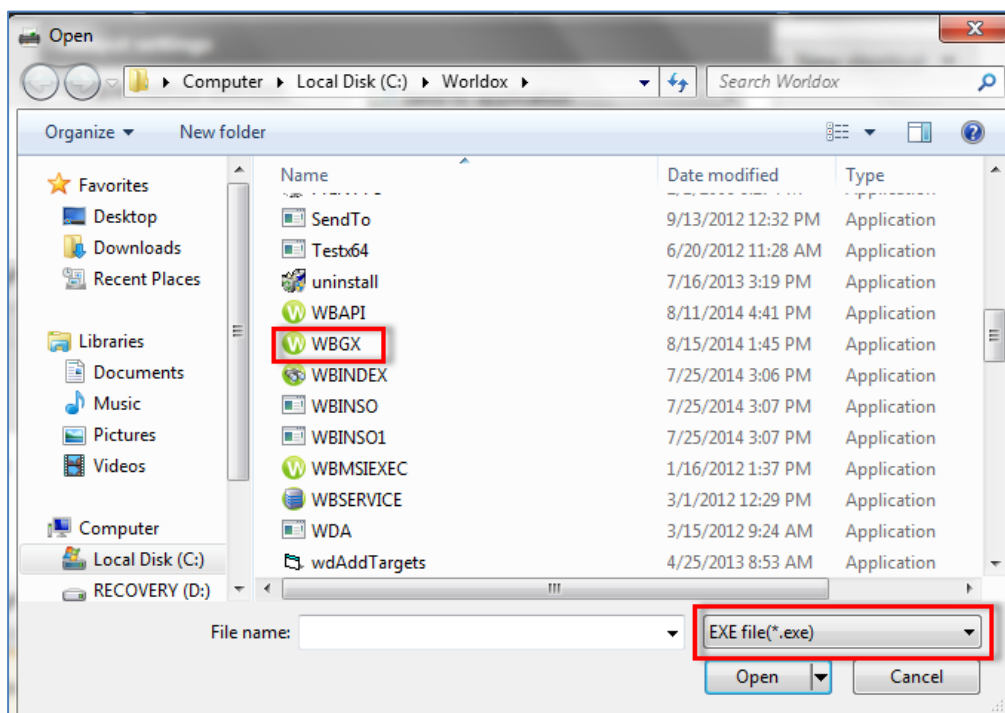
The Standard Scanning screen confirms that **WDSCANSAVE** was added as an output method.



9. In the Standard Scanning screen's General section, change the Name to **Send to Worldox** (or any name that you will be able to identify easily for this Worldox integration).

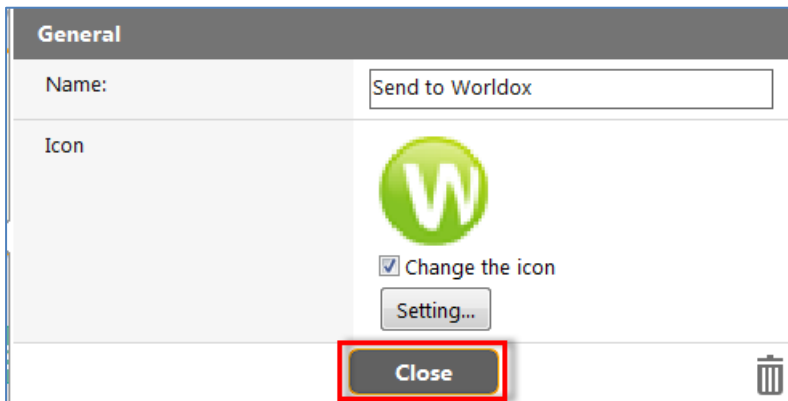


10. Click the **Change the icon** check box and then click **Setting**.
11. The Open dialog appears. Change the file extension to **.EXE** and browse to the **WBGX.exe** file in the **C:\Worldox** program folder.

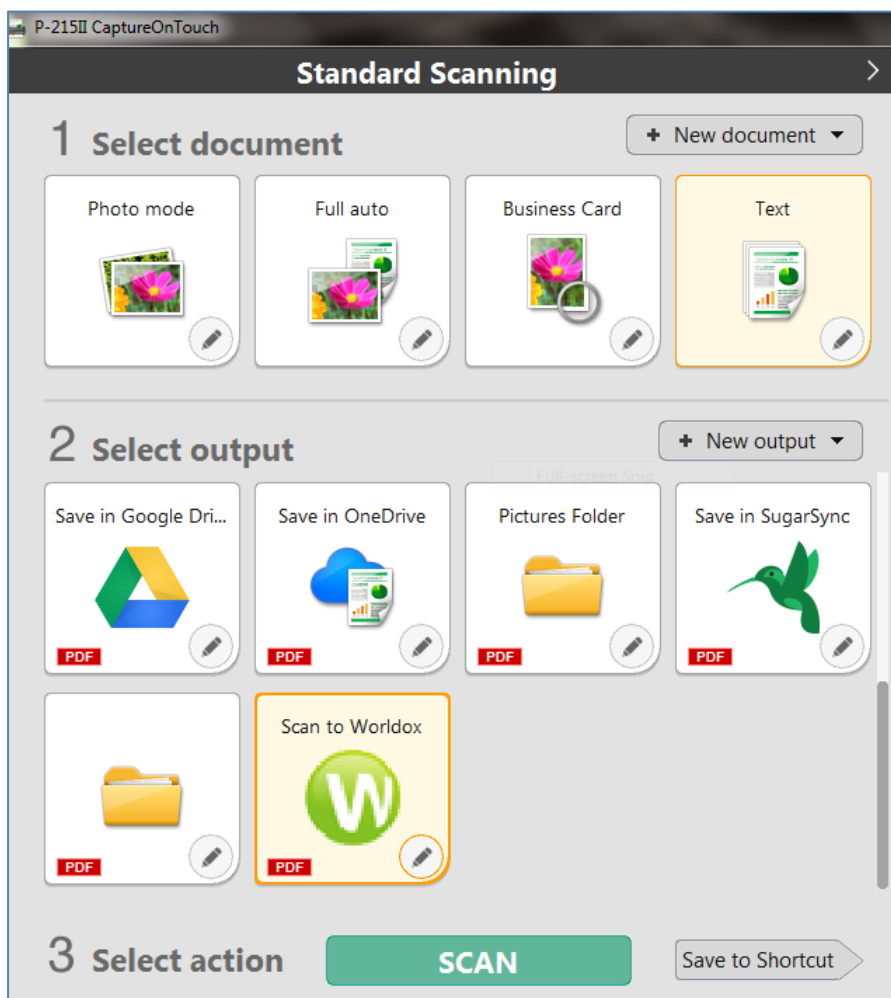


12. Click **Open**.

13. In the Output settings dialog's General section, the Worldox icon now appears as a new output method. Click **Close**.

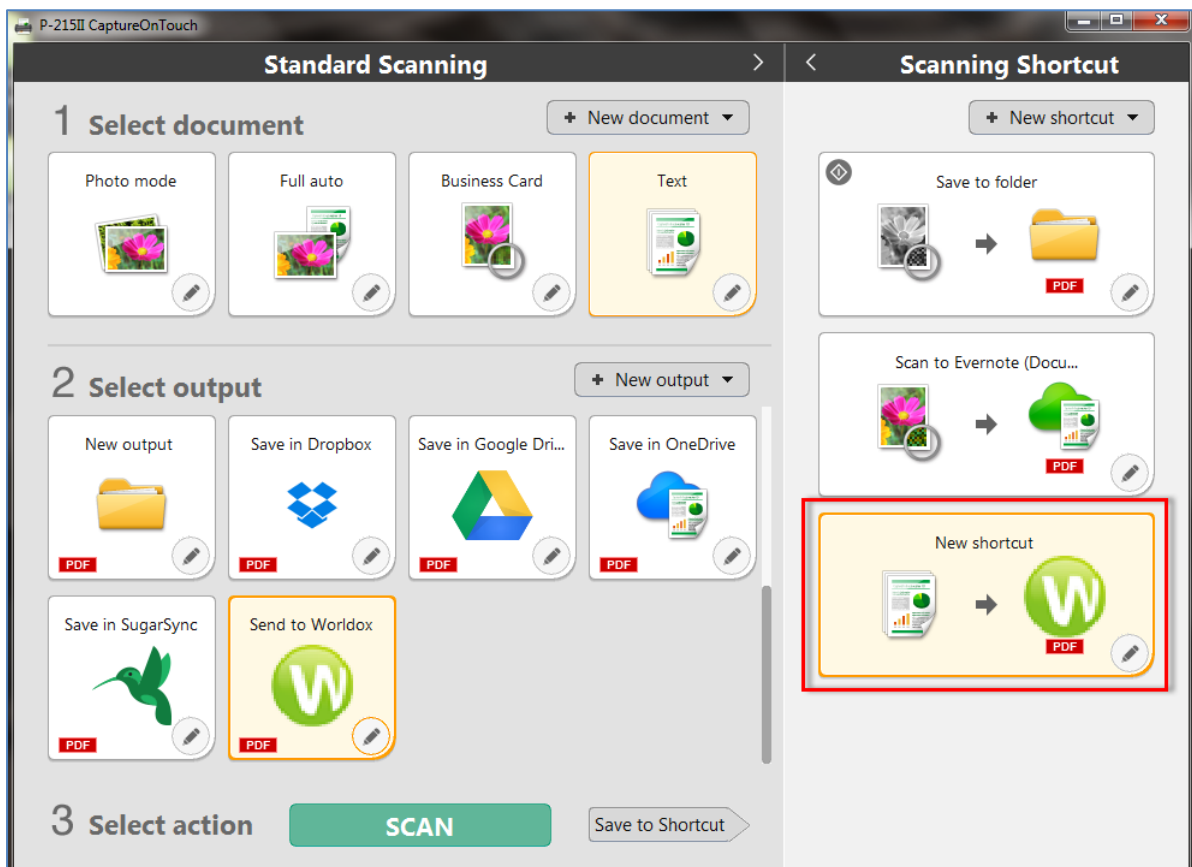


Now that all settings have been configured and saved, **Send to Worldox** appears as a new output method in the Standard Scanning screen.



How to Add the Worldox Output Method as a Shortcut

In the Standard Scanning screen, you can click **Save to Shortcut** to save the Worldox output method as a scanning shortcut.

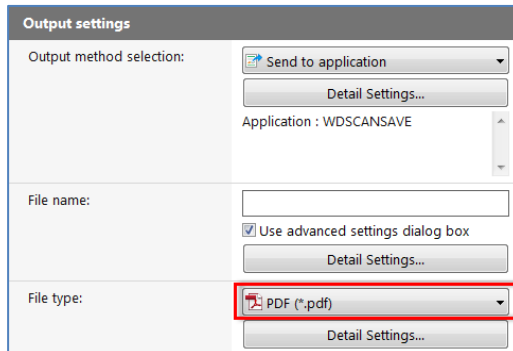


How to Scan a Document and Save it to Worldox

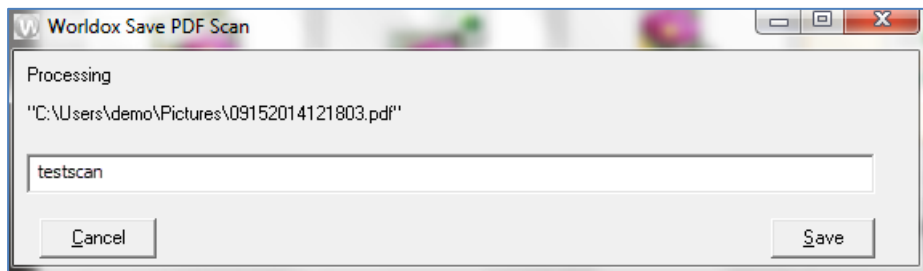
1. Launch the Canon Scanner P-215II CaptureOnTouch software on your machine.
2. Ensure that Worldox is running.
3. Scan a document with the Canon Scanner P-215II scanner using the Output item or shortcut we just created in the steps above.
4. After the scanner has finished processing the document, the normal Worldox Save As dialog appears. Fill out the Worldox Profile card like any Worldox Save.
5. The scanned document is now saved to Worldox with profile information and stored in the Worldox system based on its Profile.

Notes:

- You can change the file type from PDF to another option using the Output settings dialog's **File type** drop-down. The Output settings dialog is described in *How to Add Worldox as a New Output Method for the Canon Scanner*.



- If you select the Worldox scanning option in the Canon Scanner P-215II CaptureOnTouch software on your machine before you have scanned the document, a pop-up informs you that there is no image to scan and prompts you to perform the scan to proceed.
- Note if you select the Worldox Output option during scan and Worldox is not running you will see this dialog.



If Worldox is loaded, you will then see the normal Worldox Save As dialog in place of this dialog.